

THE LENOX GARDEN CLUB

President:
Mr. Richard Goodman
25 Members in 1911

1911

U.S. President:
William H. Taft

U.S. Vice President:
James S. Sherman

U.S. Population 1910
Census:
93,863,000

Cost of a first-class
stamp: \$0.02

IN THE NEWS NOBEL PRIZES Chemistry – Marie Curie (France)

discovery of elements
radium and polonium
Physics – Wilhelm Wien
(Germany) for his laws
governing the radiation
of heat

Medicine – Allvar Gull-
strand (Sweden) for work
on the Dioptrics of the eye
Peace - Tobias Asser
receives Nobel Prize for
peace.

BUSINESS & INDUSTRY

Chevrolet officially enters
the automobile market
to compete with the Ford
Model T

EXPLORATION

Road Amundsen
becomes the first man
to reach the South Pole
and US explorer Hiram
Bingham re-discovers
the Incan City of Machu
Picchu.



Then and Now

GCA FLOWER SHOW
THE LENOX GARDEN CLUB
CELEBRATES 100 YEARS

1911 & 2011



THE LENOX GARDEN CLUB

President:
Mary Harrison
84 Members in 2010-2011

2011

U.S. President:
Barack Obama

U.S. Vice President:
Joseph Biden, Jr.

U.S. Population 2010:
308,745,538

Cost of a first-class
stamp: \$0.44

IN THE NEWS BUSINESS & INDUSTRY

IDC - Interactive Data
Corp. estimates that
Microsoft's partners
worldwide will
generate US\$537 billion
in 2009 despite global
economic turmoil.

EXPLORATION

The James Webb Space
Telescope is NASA's next
orbiting observatory and
successor to the Hubble
Space Telescope. It is a
tennis court sized
telescope orbiting far
beyond the Earth's moon.
Webb will detect infrared
radiation and be capable
of seeing in that
wavelength as well as
the Hubble Telescope
sees invisible light.



Then and Now
 GCA FLOWER SHOW
 THE LENOX GARDEN CLUB
 CELEBRATES 100 YEARS
 1911 & 2011

Division I - Flower Arrangement
Class 1: Step Back In Time
 A lady's shoe decorated with fresh and / or dried plant material.

Then and Now
 GCA FLOWER SHOW
 THE LENOX GARDEN CLUB
 CELEBRATES 100 YEARS
 1911 & 2011

Division II - Horticulture

- Class 1 Pot of Pear
- Class 2 Terrarium
- Class 3 Large Container Garden
- Class 4 Trough Garden
- Class 5 Begonia
- Class 6 Fern
- Class 7 Flowering Houseplants (In Bloom)
- Class 8 Foliage Houseplants
- Class 9 General
- Class 10 Orchid (In Bloom)
- Class 11 Tropical Plants
- Class 12 Cacti and Succulents
- Class 14-A Challenge Class
Saxonia purpuracea
- Class 14-B Challenge Class
Fuchsia leucostylax
- Class 15 Bar Class - An exhibit of exceptional horticultural merit.

Then and Now
 GCA FLOWER SHOW
 THE LENOX GARDEN CLUB
 CELEBRATES 100 YEARS
 1911 & 2011

Division III - Photography
Color and Monochrome

- Class 1 Chase Wire the Days - Landscape Traditional Garden Designs
 A. Color B. Monochrome
- Class 2 Remember When - Still Life Old Fashioned Wares in the Garden
 A. Color B. Monochrome
- Class 3 Looking Into the Future - Close Up Focus On "Things to Come"
 A. Color B. Monochrome

Then and Now
 GCA FLOWER SHOW
 THE LENOX GARDEN CLUB
 CELEBRATES 100 YEARS
 1911 & 2011

Division IV - Botanical Jewelry
Class 1: Treasured Gem
 Design an antique style brooch composed of dried plant materials. Staged on a form provided by the Committee and placed on a pedestal.

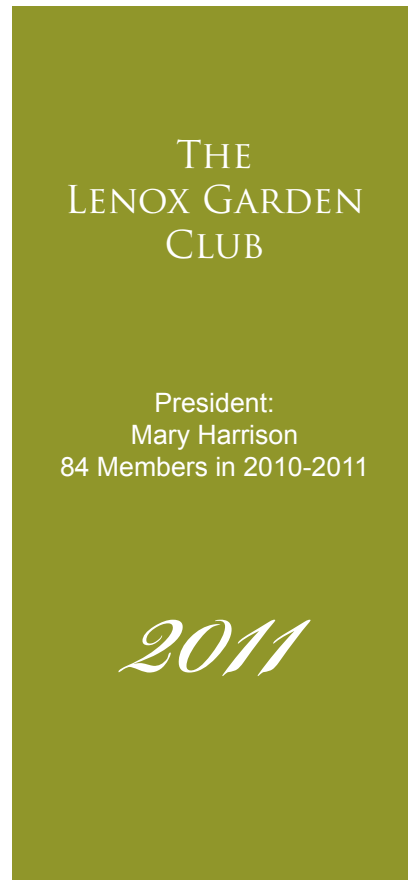
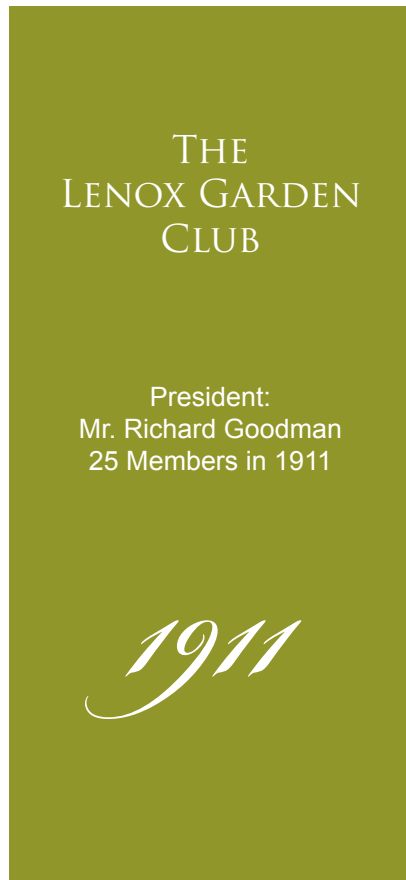
Then and Now
 GCA FLOWER SHOW
 THE LENOX GARDEN CLUB
 CELEBRATES 100 YEARS
 1911 & 2011

Division V - Education
Historical Perspectives
 Garden Designs 1911 - 2011
 Plant and Garden Trends

Contents

PHOTO CREDITS FOR THIS REPORT:
 TJASA SPRAGUE &
 MARYELLEN O'BRIEN

| | |
|---------------------------------|----|
| THANK YOU LETTER | 4 |
| ENTRIES | 7 |
| LIST OF SPECIAL AWARD WINNERS | |
| FLOWER ARRANGEMENT | 19 |
| HORTICULTURE | 29 |
| PHOTOGRAPHY | 51 |
| BOTANICAL JEWELRY | 57 |
| CONSERVATION | 59 |
| EDUCATION | 61 |
| PHOTO ALBUM | |
| DIVISION I | 8 |
| DIVISION II | 20 |
| DIVISION III | 30 |
| DIVISION IV | 52 |
| DIVISION V | 58 |
| DIVISION V | 60 |
| FLOWER ARRANGEMENT CLASSES | 8 |
| HORTICULTURE CLASSES | 20 |
| PHOTOGRAPHY | 30 |
| BOTANICAL JEWELRY | 52 |
| CONSERVATION | 58 |
| EDUCATION | 60 |
| BEHIND THE SCENES | 62 |
| AND THEN IT WAS...CLEAN UP TIME | 68 |



15 September 2011

Dear Lenox Garden Club Members and Friends of The Lenox Garden Club,
I wish to express my sincere appreciation and thanks to the LGC members who entered our GCA Flower Show at Ventfort Hall on September 15th along with our friends from other GCA clubs throughout the twelve GCA Zones and to the judges who came from near and far.

The flower arrangements were creative and the standards were superior. Congratulations to:
Leslie Snyder/ Lenox GC / Zone I
GCA Dorothy Vietor Munger Award

Margot Paddock / Berkshire Garden Club / Zone I
GCA Harriet de Waele Puckett Creativity Award
LGC Gertrude Burdsall Flower Arrangement Award

Arabella Dane / North Shore GC / Zone I
Best in Show Flower Arrangement Division

Paula Gimblette / Lenox GC / Zone I
GCA Sandra Baylor Novice Award

Debbie D, Smith / Lenox GC / Zone I
LGC Creativity Award

Margot Paddock / Berkshire GC / Zone I
LGC Gertrude Burdsall Flower Arrangement Award

Horticulture entries received many kudos as well, especially the Large Container Class that received a Judge's Commendation. The top awards were received by:

Sylvia Abbott / Litchfield GC / Zone II
Best in Show Horticulture Division
GCA Beattie Medal
Specimen: Euphorbia decaryi

Gloria McMahon / Lenox GC / Zone I
GCA Rosie Jones Award
Specimen: Hedera helix

MaryEllen O'Brien / Lenox GC / Zone I
GCA Willemsen Propagation Award
Specimen: Sarracenia purpurea

Carol White / Lenox GC / Zone I
GCA Novice Horticulture Award
Specimen: Ficus

Carolyn King / Lenox GC / Zone I
LGC Gertrude Burdsall Horticulture Award
Specimen: Large Container Garden

Several of our members acted as clerks in all divisions for our judging panels.

Sally Set
Ellen Greendale
Leslie Snyder
Paula Gimblette
Susan Dana
Mary Spina
Carolyn King
Margaret Lindenmaeir
Debbie Smith

Our members helped pass Flower Arrangements, Horticulture, Botanical Jewelry and Photography:

Rosemarie Siegel
Leslie Snyder
MaryEllen O'Brien
Susan Dana
Debbie Smith
Paula Gimblette
Carolyn King

Our intrepid Greeting Staff who assisted entrants and judges with all their needs:

Liz Murray
Helen Davies
Vaunie Graulty
Crisse MacFadyen

I especially wish to thank the angels who came for the set up and the take down of the show:

| | |
|-----------------|-------------------|
| Debbie Smith | Sarah Boyd |
| Leslie Snyder | Juliet Emery |
| Wendy Philbrick | Sally Set |
| Susan Dana | Liz Murray |
| Paula Gimblette | Kimberley Crocker |
| Debbie Douglas | Ellen Greendale |
| Carolyn King | |

The Breakfast refreshments were exceptional and beautifully presented for our judges. Thank you:

Kimberley Crocker
Tjasa Sprague

The Judge's Luncheon at the Lenox Club was a blue ribbon winner as well. Our invited judges were delighted. Thank you:

Joan Comeau, Hostess
Carolyn King, Place Cards

To Arabella Dane of the North Shore Garden Club of Massachusetts for her entertaining and very educational "Flower Show - Walk Through" with all our members...Carefully explaining just what the judges saw, and how they make their decisions. Thank you, our members are very grateful for your insights.

I especially want to express my sincere thanks to Tjasa Sprague and the entire staff of Ventfort Hall. It was the perfect venue for our 100th Anniversary Flower Show. The staff of Ventfort Hall was most helpful in every aspect of the show... from the early staging, to the final pick up and close of the show. And speaking of staging...I wish to say thanks to my husband, Paul for his hours of work constructing our new pedestals for this show and for his help transporting all the staging to Ventfort Hall. We couldn't have done it without you.

Members...thank you all for your help. I apologize if I have omitted anyone from this letter. During the show, you saw what was needed and you stepped in and did it. For this I am grateful. This was a spectacular show fitting of our 100th Anniversary. Your support made it all happen and I want to express my sincerest thanks to you all.

Fondly,
MaryEllen O'Brien
Then and Now Flower Show Chairperson

The word "Entries" is written in a large, elegant, green cursive font. The letters are fluid and interconnected, with a prominent 'E' that loops around the 'n'. The color is a vibrant lime green.

Then and Now

GCA FLOWER SHOW
THE LENOX GARDEN CLUB
CELEBRATES 100 YEARS

1911 & 2011

Division I - Flower Arrangement

Class 1: Step Back In Time

A lady's shoe decorated with
fresh and / or dried plant material.



MaryEllen O'Brien / Lenox GC / Zone I
Yellow Ribbon



Carrie Wilcox / Sasqua GC / Zone II
Red Ribbon



Paula Gimblette / Lenox GC / Zone I
Blue / GCA Sandra Baylor Novice Award



Rosemarie Siegel / Lenox GC / Zone I
Honorable Mention

Then and Now

GCA FLOWER SHOW
THE LENOX GARDEN CLUB
CELEBRATES 100 YEARS
1911 & 2011

Division I - Flower Arrangement

Class 2: A Little Look Back

A small arrangement
reminiscent of days
gone by to be viewed
from the front.
A Small Arrangement
is more than 5 inches
but less than 9 inches
in height, width and depth.



Wendy Philbrick / Lenox GC / Zone I
Yellow Ribbon



Sally Set / Lenox GC / Zone I
Honorable Mention



Lenore Sunderberg / Lenox GC / Zone I
Red Ribbon



Debbie Douglas / Lenox GC / Zone I
Blue Ribbon

Then and Now

GCA FLOWER SHOW
THE LENOX GARDEN CLUB
CELEBRATES 100 YEARS
1911 & 2011

Division I - Flower Arrangement

Class 5 - It's My Bag

A Decorated Purse made from fresh
and/or dried plant materials.
Purse supplied by the Committee.
Displayed on a chair and
viewed from 3 sides.



Barb May / Lenox GC / Zone I
Honorable Mention Ribbon



Debbie Smith / Lenox GC / Zone I
Blue Ribbon / LGC Craftsmanship Award



Ginna Thoma / Worcester GC / Zone I
Yellow Ribbon



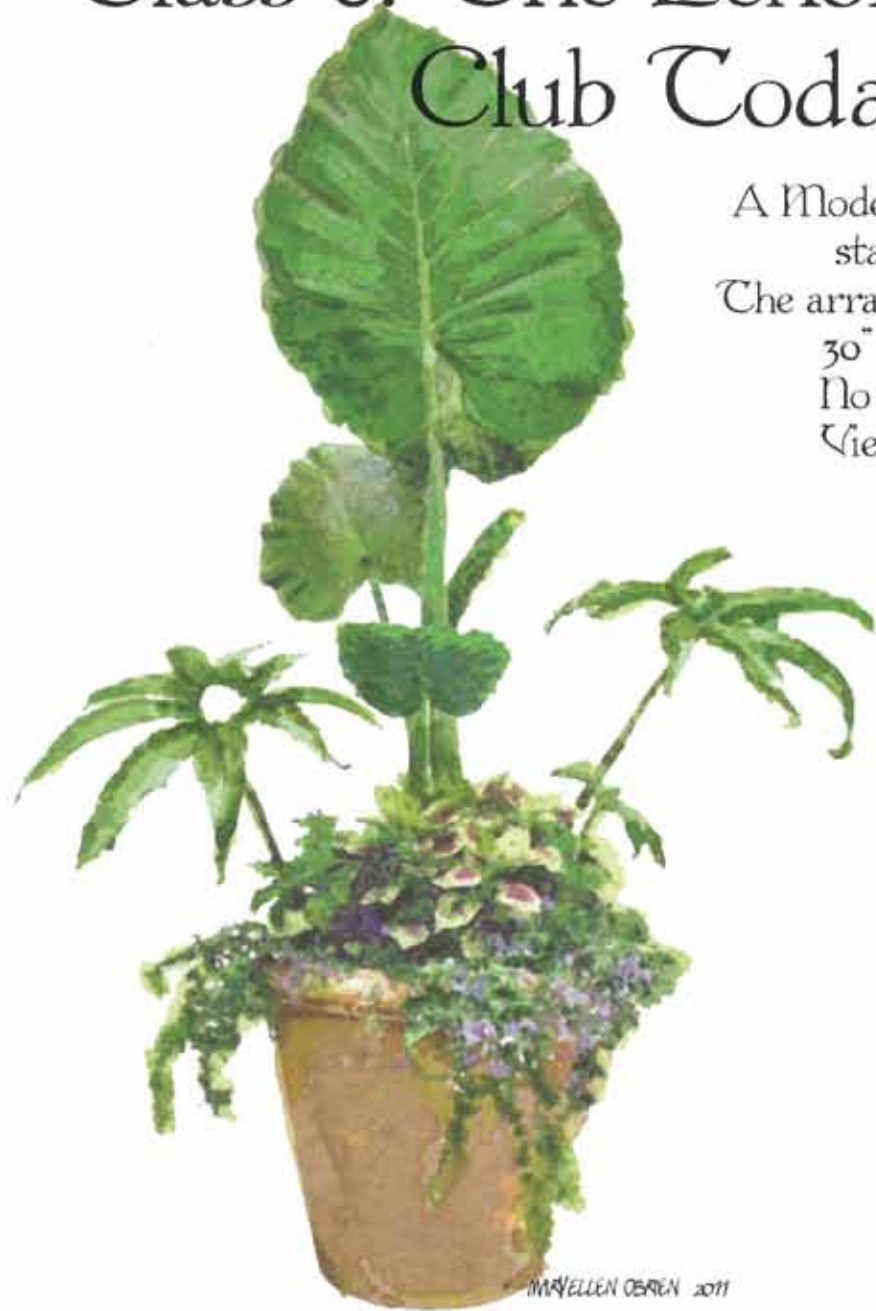
Susan Detjens / Millbrook GC / Zone III
Red Ribbon

Then and Now

GCA FLOWER SHOW
THE LENOX GARDEN CLUB
CELEBRATES 100 YEARS
1911 & 2011

Division I - Flower Arrangement

Class 6: The Lenox Garden Club Today



A Modern Mass Arrangement
staged on a pedestal.
The arrangement may not exceed
30" in width or depth.
No height restrictions.
Viewed from all sides.

MARVELLEN O'BRIEN 2011



Arabella Dane / No. Shore GC / Zone I
Blue Ribbon / Best in Show Division I



Kimberley Crocker . Lenox GC / Zone I
Honorable Mention



Leslie Snyder / Lenox GC / Zone 1
Red / GCA Dorothy V. Munger Award



Kathy Michie / Worcester GC / Zone I
Yellow Ribbon

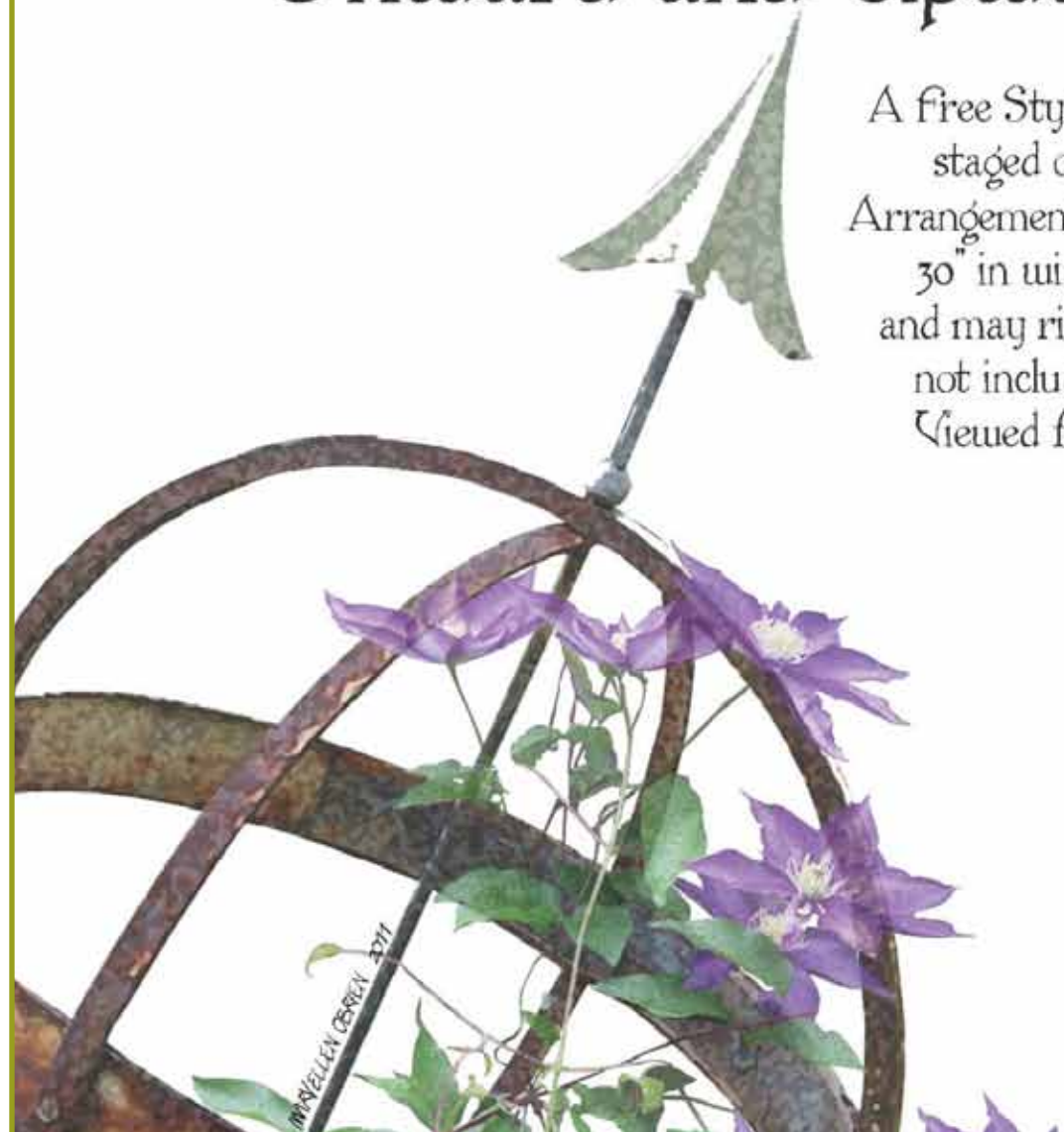
Then and Now

GCA FLOWER SHOW
THE LENOX GARDEN CLUB
CELEBRATES 100 YEARS
1911 & 2011

Division I - Flower Arrangement

Class 7: New Directions... Onward and Upward

A free Style Arrangement
staged on a 16" cube.
Arrangement may not exceed
30" in width or depth,
and may rise to 6' feet tall
not including the base.
Viewed from all sides.



MaryEllen O'Brien / Lenox GC / Zone I
Yellow Ribbon



Margot Paddock / Berkshire GC / Zone I
Puckett Award - LGC Burdsall Award



Joan Comeau / Lenox GC / Zone I
Blue Ribbon



Liz Piazza / Three Harbors GC / Zone III
Honorable Mention



FLOWER SHOW SPECIAL AWARD WINNERS

Leslie Snyder / Lenox GC / Zone I
GCA Dorothy Vietor Munger Award

Margot Paddock / Berkshire GC / Zone I
GCA Harriet de Waele Puckett Creativity Award
LGC Gertrude Burdsall Flower Arrangement Award

Arabella Dane / North Shore GC / Zone I
Best in Show Flower Arrangement Division

Paula Gimblette / Lenox GC / Zone I
GCA Sandra Baylor Novice Award

Debbie D. Smith / Lenox GC / Zone I
LGC Craftsmanship Award

Then and Now

GCA FLOWER SHOW
THE LENOX GARDEN CLUB
CELEBRATES 100 YEARS
1911 & 2011



Division II - Horticulture

- Class 1 Pot - et fleur
- Class 2 Terrarium
- Class 3 Large Container Garden
- Class 4 Trough Garden
- Class 5 Begonia
- Class 6 fern
- Class 7 Flowering Houseplants (In Bloom)
- Class 8 foliage Houseplants
- Class 9 Gesneriad
- Class 11 Orchid (In Bloom)
- Class 12 Trained Plants
- Class 13 Cacti and Succulents
- Class 14A Challenge Class
 - Saracenia purpurpea
- Class 14B Challenge Class
 - festuca (cinera) glauca
- Class 15 Par Class - An exhibit of exceptional horticultural merit

MARYELLEN O'BRIEN 2011



Sylvia Abbott / Litchfield GC / Zone II
GCA Beattie Medal and Best in Show
Euphorbia



Gloria McMahon / Lenox GC / Zone I
GCA Rosie Jones Award
Hedera



MaryEllen O'Brien / Lenox GC / Zone I
GCA Willemssen Propagation Award
Sarracenia



Carol White / Lenox GC / Zone I
GCA Novice Award
Ficus



Carolyn King / Lenox GC / Zone I
LGC Gertrude Burdsall Horticulture Award
Large Container Garden



MaryEllen O'Brien / Lenox GC / Zone I
Red Ribbon
Trough Garden



Begonia Class



Beth Hume / Piscataqua GC / Zone I
Blue Ribbon
Trough Garden



Gloria McMahon / Lenox GC / Zone I
Begonia



Debbie D. Smith / Lenox GC / Zone I
Begonia



Paula Gimblette / Lenox GC / Zone I
Red Ribbon
Begonia



Paula Gimblette / Lenox GC / Zone I
Large Container Garden



Carolyn King / Lenox GC / Zone I
Large Container Garden



Susan Dana / Lenox GC / Zone I
Large Container Garden



Beth Hume / Piscataqua GC / Zone I
Large Container Garden



Paula Gimlette / Lenox GC / Zone I
Large Container Garden



MaryEllen O'Brien / Lenox GC / Zone I
Red Ribbon
Pot-et-Fleur



Paula Gimlette / Lenox GC / Zone I
Red Ribbon
Challenge Class Fescue Grass



MaryEllen O'Brien / Lenox GC / Zone I
Blue Ribbon
Staghorn Fern



Trained Plant Class



Carolyn King / Lenox GC / Zone I
Yellow Ribbon
Fern



Susan Dana / Lenox GC / Zone I
Red Ribbon
Pelargonium



MaryEllen O'Brien / Lenox GC / Zone I
Blue Ribbon
Crassula



Mary Harrison / Lenox GC / Zone I



Gloria McMahon / Lenox GC / Zone I
Red Ribbon
Haworthia



Sally Set / Lenox GC / Zone I
Yellow Ribbon
Crassula



MaryEllen O'Brien / Lenox GC / Zone I
Red Ribbon
Kalenchoe



Susan Dana / Lenox GC / Zone I
Yellow Ribbon
Challenge Class Fescue Grass



Gloria McMahon
Red Ribbon
Fern



Paula Gimblette / Lenox GC / Zone I
Red Ribbon
Asparagus Fern



MaryEllen O'Brien / Lenox GC / Zone I
Cacti



Paula Gimblette / Lenox GC / Zone I
Yellow Ribbon
Hypoestes

HORTICULTURE SPECIAL AWARD WINNERS

Sylvia Abbott / Litchfield GC / Zone II
Best in Show Horticulture Division
GCA Beattie Medal
Euphorbia decaryi

Gloria McMahon / Lenox GC / Zone I
GCA Rosie Jones Award
Hedera helix

MaryEllen O'Brien / Lenox GC / Zone I
GCA Willemsen Propagation Award
Sarracenia purpurea

Carol White / Lenox GC / Zone I
GCA Novice Horticulture Award
Ficus

Carolyn King / Lenox GC / Zone I
LGC Gertrude Burdsall Horticulture Award
Large Container Garden

HORTICULTURE JUDGE'S COMMENDATION

CLASS 3
Large Container Garden Class
Superior evidence of talent and enthusiasm
for large container gardens.

Then and Now

GCA FLOWER SHOW
THE LENOX GARDEN CLUB
CELEBRATES 100 YEARS
1911 & 2011

Division III Photography

Color and Monochrome

- Class 1 Those Were the Days - Landscape
Traditional Garden Designs
A. Color B. Monochrome
- Class 2 Remember When - Still Life
Old fashioned Ways in the Garden
A. Color B. Monochrome
- Class 3 Looking Into the future - Close Up
Focus On Things to Come
A. Color B. Monochrome



Connie Oliver / Garden Club of Dublin / Zone I

Blue Ribbon



JoAnne Wahlstrom / St. Paul GC / Zone XI

Red Ribbon

CLASS 1A - THOSE WERE THE DAYS – LANDSCAPE - COLOR
TRADITIONAL GARDEN DESIGNS



Susan Brewer / Garden Club of Darien / Zone II

Honorable Mention

CLASS 1B - HOSE WERE THE DAYS – LANDSCAPE - MONOCHROME
TRADITIONAL GARDEN DESIGNS



Mary Turner / Seattle GC / Zone XII

Red Ribbon



Ray Taggart Chilton / River Oaks GC / Zone IX

Yellow Ribbon



Debbie Ross / Garden Club of Winnetka / Zone XI

Yellow Ribbon



Susan Hilpert / Seattle GC / ZONE XII



Judith K. McMillian/ Shaker Lakes GC / Zone X

CLASS 2 A - REMEMBER WHEN – STILL LIFE - COLOR
OLD FASHIONED WAYS IN THE GARDEN



Sally Barnett / Late Bloomers GC / Zone VIII

Blue Ribbon and GCA Best in Show

CLASS 2 A - REMEMBER WHEN – STILL LIFE - COLOR
OLD FASHIONED WAYS IN THE GARDEN



Connie Oliver / GC of Dublin / Zone I

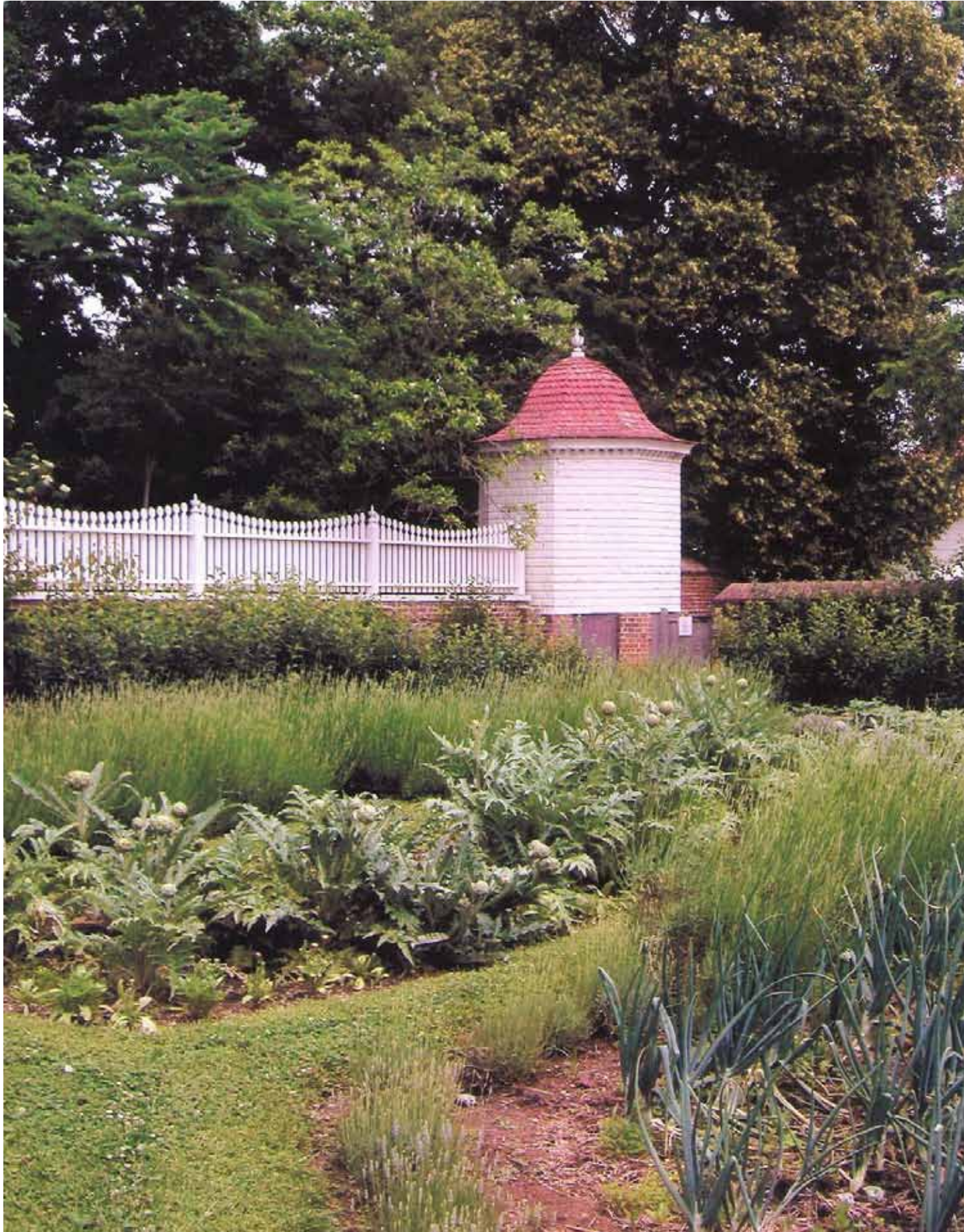
Red Ribbon



Margot Paddock / Berkshire GC / Zone I

Yellow Ribbon

CLASS 2 A - REMEMBER WHEN – STILL LIFE - COLOR
OLD FASHIONED WAYS IN THE GARDEN



Joanne Lenden / Fort Orange GC / Zone III

Honorable Mention

CLASS 2 A - REMEMBER WHEN – STILL LIFE - COLOR
OLD FASHIONED WAYS IN THE GARDEN



Susan Klein / Akron GC / Zone X

Honorable Mention

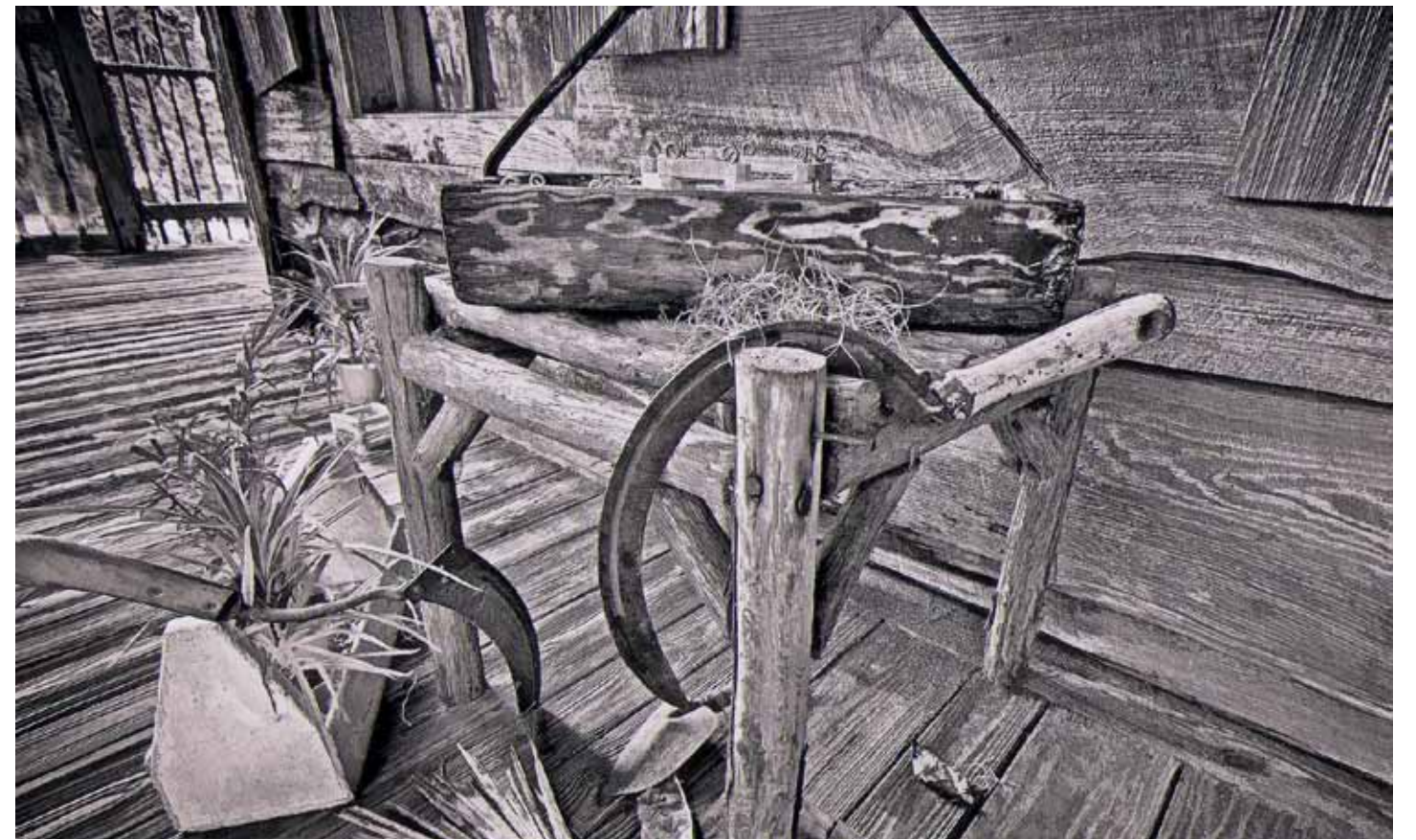
CLASS 2 B - REMEMBER WHEN – STILL LIFE - MONOCHROME
OLD FASHIONED WAYS IN THE GARDEN



MaryEllen J. O'Brien / Lenox GC / Zone I

Blue Ribbon

CLASS 2 B - REMEMBER WHEN – STILL LIFE - MONOCHROME
OLD FASHIONED WAYS IN THE GARDEN



Jean Matthews / GC of Palm Beach / Zone VIII

Red Ribbon



Carol Large / North Country GC of Long Island / Zone III

Yellow Ribbon

CLASS 2 B - REMEMBER WHEN – STILL LIFE - MONOCHROME
OLD FASHIONED WAYS IN THE GARDEN



Eloise Carson / Portland GC / Zone XII

Honorable Mention

CLASS 3 A - LOOKING INTO THE FUTURE – CLOSE UP - COLOR
FOCUS ON THINGS TO COME



Lula L. Potter / Magnolia GC / Zone IX

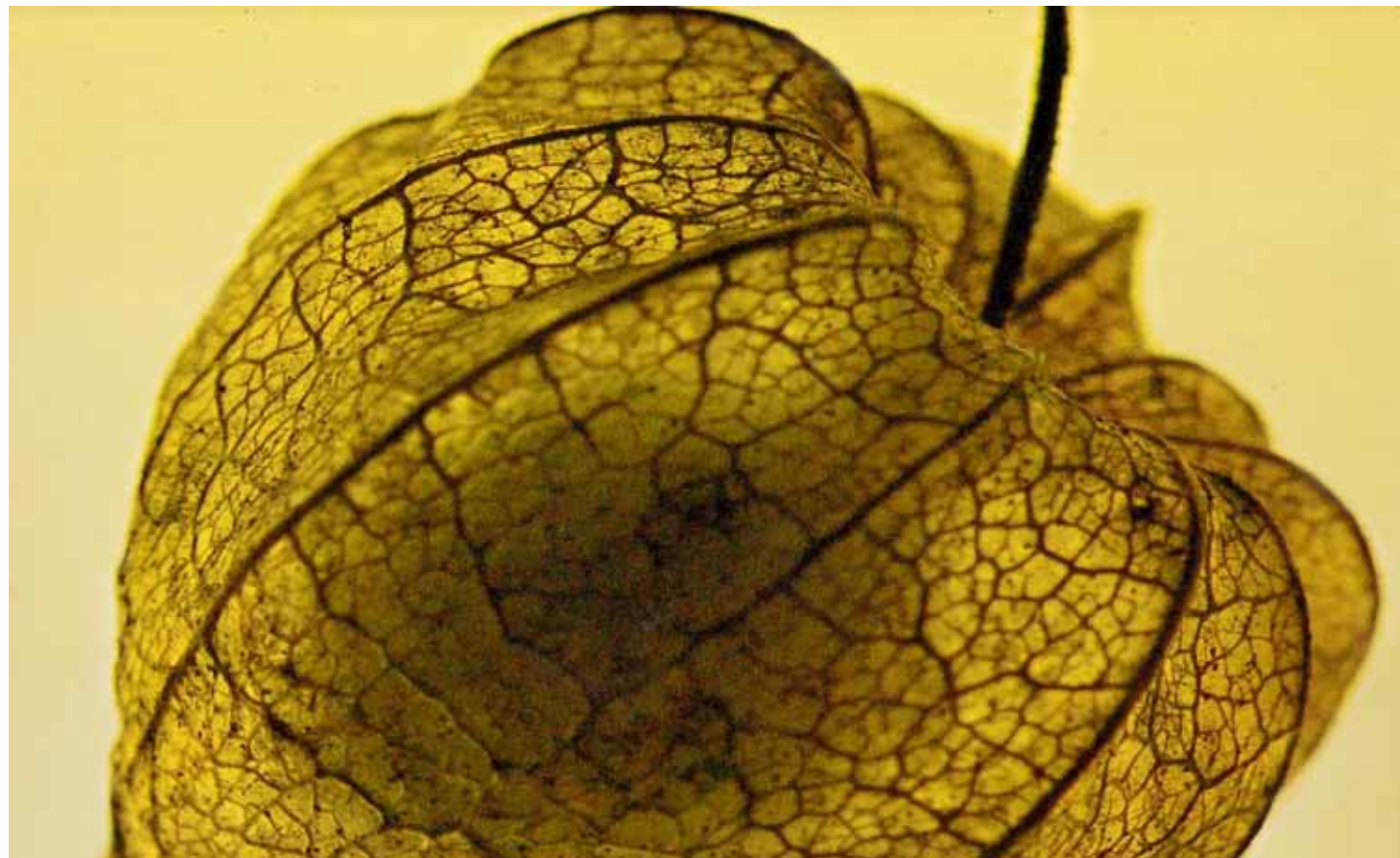
Honorable Mention

CLASS 3 A - LOOKING INTO THE FUTURE – CLOSE UP - COLOR
FOCUS ON THINGS TO COME



Ellen Shapiro / GC of Irvington / Zone III

Red Ribbon



Betty Clarke / Magnolia GC / Zone IX

Yellow Ribbon

CLASS 3 A - LOOKING INTO THE FUTURE – CLOSE UP - COLOR
FOCUS ON THINGS TO COME



Whitney Smith / Alamo Heights-Terrell Hills GC / Zone IX

Honorable Mention

CLASS 3 A - LOOKING INTO THE FUTURE – CLOSE UP - COLOR
FOCUS ON THINGS TO COME



Kathy de la Heras / Millbrook GC / Zone III Blue Ribbon & LGC Creative Photograph Award

CLASS 3 A - LOOKING INTO THE FUTURE – CLOSE UP - MONOCHROME
FOCUS ON THINGS TO COME



Gail Cyr / South County GC / Zone II

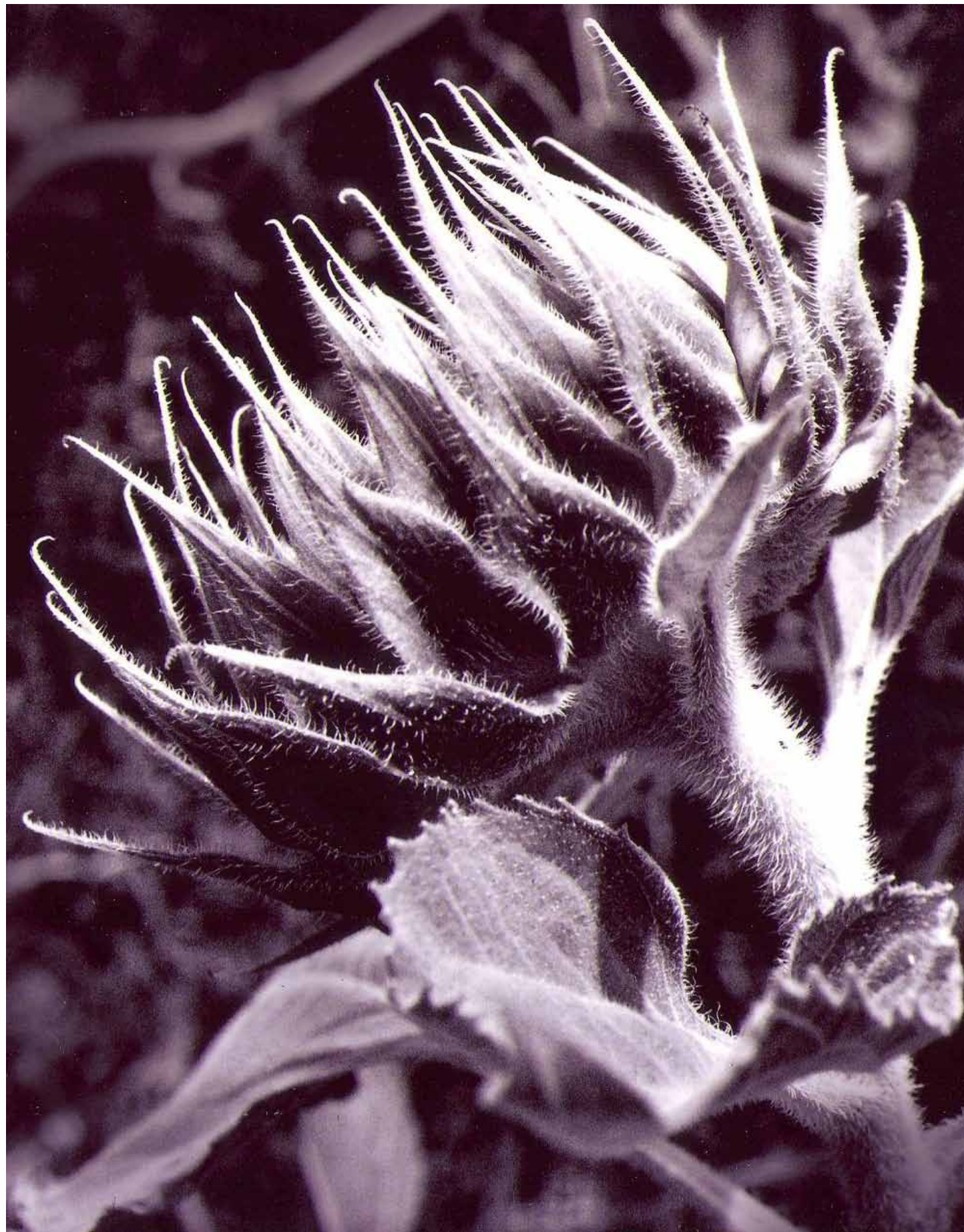
Yellow Ribbon



Emily Kelting / GC of New Haven / Zone III

Honorable Mention

CLASS 3 A - LOOKING INTO THE FUTURE – CLOSE UP - MONOCHROME
FOCUS ON THINGS TO COME



Susan Hilpert / Seattle GC / Zone XII

Honorable Mention

CLASS 3 A - LOOKING INTO THE FUTURE – CLOSE UP - MONOCHROME
FOCUS ON THINGS TO COME



Nadia Valla / Little GC of Rye / Zone III

Blue Ribbon & GCA Photography Committee Award



Sally Kadell / Carmel-By-The-Sea GC / Zone XII

Red Ribbon

PHOTOGRAPHY SPECIAL AWARD WINNERS

Sally Barnett / Late Bloomers GC / Zone VIII
Best in Show Photography Division

Nadia Valla / Little GC of Rye / Zone III
GCA Photography Committee Award

JUDGE'S COMMENDATION

Unusually fine response to a challenging schedule.
Well staged and suitable for public viewing.

Then and Now

GCA FLOWER SHOW
THE LENOX GARDEN CLUB
CELEBRATES 100 YEARS
1911 & 2011

Division IV - Botanical Jewelry

Class 1: Treasured Gem

Design an antique style brooch
composed of dried plant materials.
Staged on a form provided by the Committee
and placed on a pedestal.



Gloria McMahon / Lenox GC / Zone I
Red



Mary Harrison / Lenox GC / Zone I
Yellow Ribbon



Debbie Douglas / Lenox GC / Zone I
Blue / GCA Novice Award Bot. Jewelry



Wendy Philbrick / Lenox GC / Zone I
Honorable Mention

Then and Now

GCA FLOWER SHOW
THE LENOX GARDEN CLUB
CELEBRATES 100 YEARS

1911 & 2011

Division IV - Botanical Jewelry

Class 2: Modern Keepsake

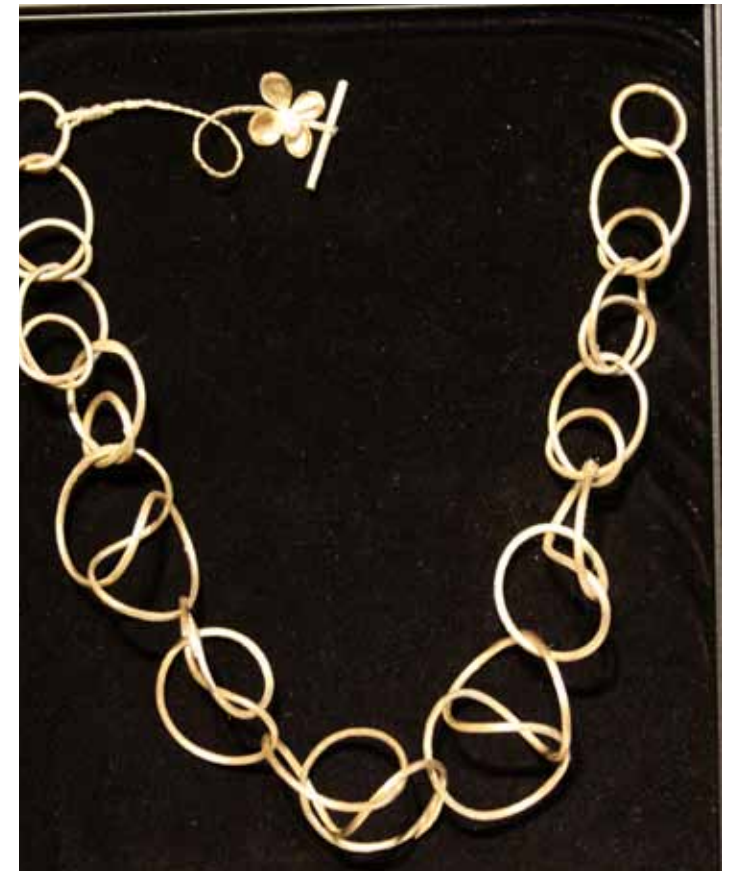
Design a contemporary style necklace
composed of dried plant materials.
Staged on a form provided by the Committee
and placed on a pedestal.



MARY ELLEN O'BRIEN 2011



Gloria McMahon / Lenox GC / Zone I
Honorable Mention



Lisa Gerard / Rusticus GC / Zone II
Yellow Ribbon



Leslie Snyder / Lenox GC Zone I
Red Ribbon



MaryEllen O'Brien / Lenox GC / Zone I
Blue Ribbon and Best in Show



BOTANICAL JEWELRY SPECIAL AWARD WINNERS

Debbie Douglas / Lenox GC / Zone I
Blue Ribbon
GCA Novice Award Botanical Jewelry

MaryEllen O'Brien / Lenox GC / Zone I
Blue Ribbon
Best in Show Botanical Jewelry

JUDGE'S COMMENDATION

**OUTSTANDINGLY BEAUTIFUL CLASS.
ALL WELL EXECUTED.**

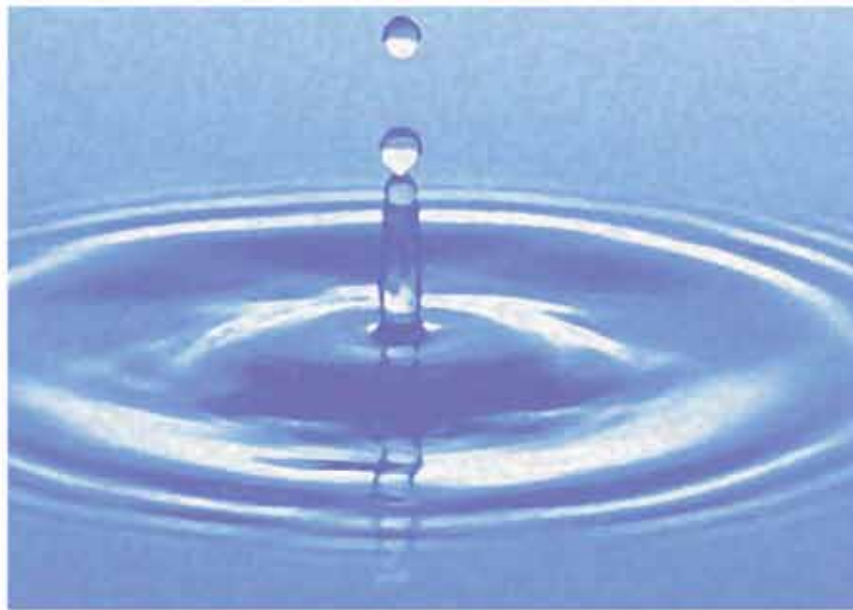
Then and Now

GCA FLOWER SHOW
THE LENOX GARDEN CLUB
CELEBRATES 100 YEARS

1911 & 2011

Division V - Conservation Exhibit

Conserving Our Water Resources



Learn easy ways to
conserve water



Conservation Exhibit by The Lenox Garden Club Conservation Committee
Awards:
GCA Marion Thompson Fuller Brown Conservation Award
LGC Vision Award

JUDGE'S COMMENDATION

BEAUTIFUL CLEAR GRAPHICS; COMMUNICATES WELL THE MESSAGE WATER CONSERVATION. THE OBJECT OF CONSERVATION EDUCATION IS WELL SERVED BY ACCOMPANYING AND PRACTICAL SUGGESTIONS FOR THE PUBLIC. LOVE THE RAIN BARREL. GOOD HANDOUTS."

Then and Now

GCA FLOWER SHOW
THE LENOX GARDEN CLUB
CELEBRATES 100 YEARS
1911 & 2011

Division V - Education

Historical Perspectives Garden Designs 1911 - 2011 Plant and Garden Trends



Education Exhibit by Jacqueline Connell / The Lenox Garden Club / Zone I
Awards:
GCA Ann Lyons Crammond Award
LGC Vision Award



Behind the Scenes









And Then...
It Was
Clean Up Time





Then and Now

GCA FLOWER SHOW
THE LENOX GARDEN CLUB
CELEBRATES 100 YEARS

1911 & 2011



In 2006, three members of The Lenox Garden Club began thinking about what the 100th Anniversary of the club should look like. They soon became the 100th Anniversary Committee Co-Chairs. Many ideas came about through discussions. Several ideas began to emerge and committees were formed and grew throughout the early years.

From these early meetings, it was decided to make a significant donation to a worthy Berkshire County institution. Since we were celebrating 100 years...It was an easy leap for the gift to be in the amount of \$100,000. Our "Hidden Treasures of the Berkshire's Garden Tour" was the means by which we were able to raise these funds. By popular vote, the project was decided. We would build a new, dedicated classroom for and old friend...The Berkshire Botanical Garden. A very appropriate gift since The Lenox Garden Club was one of the founding members of the Berkshire Botanical Garden and in turn The Berkshire Botanical Garden offered to partner this project and pick up all expenses beyond our donation.

From the early days, it was also decided the club would host a GCA Flower Show. Then and Now was hatched and it would focus on the club's early history, LGC today and our future hopes for tomorrow. Thus the name...Then and Now.

Many events have happened over the course of this anniversary year and will be fondly remembered...As we approach the close of this anniversary year, the club is contemplating our future endeavors and directions. We will continue to stimulate the love and knowledge of gardening, share the advantage of association, to aid in the protection of native plants and birds and to encourage civic planting.

Mary Harrison, LGC President

Barb May

MaryEllen O'Brien

The 100th Anniversary Committee Chairs



Then and Now

GCA FLOWER SHOW
THE LENOX GARDEN CLUB
CELEBRATES 100 YEARS

1911 & 2011



THE LENOX GARDEN CLUB
POST OFFICE BOX 552
LENOX, MASSACHUSETTS 01240

www.lenoxgardenclub.net